

P98000096567

SPIRA, BOYD, BEADLE, MCGARRELL & MARKS, L.L.C.

Attorneys & Counselors at Law

Jack B. Spira
Joel E. Boyd
James P. Beadle
Thomas P. McGarrell
Douglas D. Marks
Stephen E. Spira

Melbourne/Palm Bay Office:

5205 Babcock Street, NE
Palm Bay, Florida 32905
Telephone: (321) 725-5000
Facsimile: (321) 724-6008

Please Reply To:

Suntree/Viera Office:

6767 N. Wickham Road, Suite 306
Melbourne, Florida 32940
Telephone: (321) 751-6030
Facsimile: (321) 751-6035

Suntree/Viera
August 21, 2002

Department of State
Division of Corporations
Corporate Filings
P. O. Box 6327
Tallahassee, FL 32314


Re: Articles of Dissolution of:
I.D.S. Fort Pierce, Inc.
Document Number: P98000096548
I.D.S. Lakeland, Inc.
Document Number: P98000096571
I.D.S. Melbourne, Inc.
Document Number: P97000006624
MBS Resources, Inc.
Document Number: P98000096567

Dear Sir/Madam:

Enclosed are an original and one copy of the Articles of Dissolution of the above named Incorporations, together with a check for \$175.00 to cover the \$35.00 filing fee and \$8.75 certified copy fee on each.

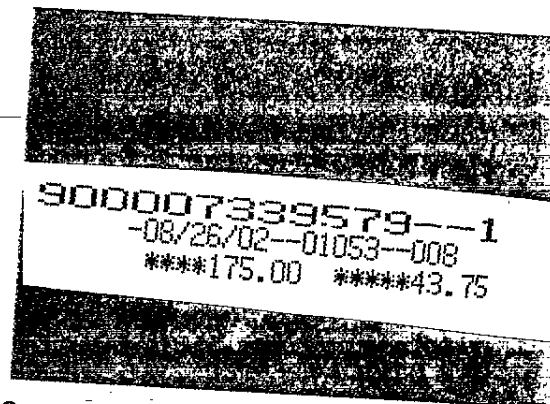
Once the Articles of Dissolution have been filed, please forward the certified copy of same to me to the address indicated above.

Very truly yours,


DOUGLAS D. MARKS

Goldis

V SHEPARD AUG 30 2002



FILED
SECRETARY OF STATE
DIVISION OF CORPORATIONS
02 AUG 26 PM 4:28

ARTICLES OF DISSOLUTION

FILED
SECRETARY OF STATE
DIVISION OF CORPORATIONS
02 AUG 26 PM 4:28

Pursuant to section 607.1403, Florida Statutes, this Florida profit corporation submits the following articles of dissolution:

FIRST: The name of the corporation is: MBS RESOURCES, INC.

SECOND: The date dissolution was authorized: May 31, 2002

THIRD: Adoption of Dissolution (CHECK ONE)

X Dissolution was approved by the shareholders. The number of votes cast for dissolution was sufficient for approval.

 Dissolution was approved by vote of the shareholders through voting groups.

Signed this 21 day of August, 2002.

Robert Sheck
ROBERT SHECK
Director