

**CORPORATE
ACCESS,
INC.**

When you need ACCESS to the world

236 East 6th Avenue. Tallahassee, Florida 32303

P.O. Box 37066 (32315-7066) ~ (850) 222-2666 or (800) 969-1666. Fax (850) 222-1666

WALK IN

PICK UP: 5/19 Glinda

☐ **CERTIFIED COPY**

☒ **PHOTOCOPY**

☐ **CUS**

☒ **FILING**

Amend

1. **HIDDEN PRESERVE HOMEOWNER'S ASSO. I, INC.**

(CORPORATE NAME AND DOCUMENT #)

2. _____
(CORPORATE NAME AND DOCUMENT #)

3. _____
(CORPORATE NAME AND DOCUMENT #)

4. _____
(CORPORATE NAME AND DOCUMENT #)

5. _____
(CORPORATE NAME AND DOCUMENT #)

6. _____
(CORPORATE NAME AND DOCUMENT #)

SPECIAL INSTRUCTIONS:

FILED

15 MAY 19 AM 9:30

ARTICLES OF AMENDMENT

To

ARTICLES OF INCORPORATION

Of

HIDDEN PRESERVE HOMEOWNER'S ASSOCIATION I, INC.

(Document #: N14000005181)

Pursuant to the provisions of Section 617.1006, Florida Statutes, this Florida not-for-profit corporation adopts the following articles of amendment to its Articles of Incorporation.

FIRST: Amendment adopted: Article III is being removed and the following Article III is being added:

ARTICLE III
PURPOSE

This Association does not contemplate pecuniary gain or profit to its members and the specific purposes for which it is formed are to provide for the maintenance, preservation and architectural control of all common areas and residential lots within that certain tract of property (hereinafter called the "Property") in Pinellas County, Florida, and more particularly described as:

(See Exhibit "A" attached hereto)

SECOND: The date of adoption of the amendment: 4/21/15

THIRD: There are no members entitled to vote on the amendment. The amendment was adopted by the board of directors.

Signed this 21 day of APRIL, 2015.


Michael Ross Kashtan, Director

POINT OF BEGINNING
NW CORNER BLOCK 138

71st AVENUE NORTH

S.89°59'21"E 326.00'

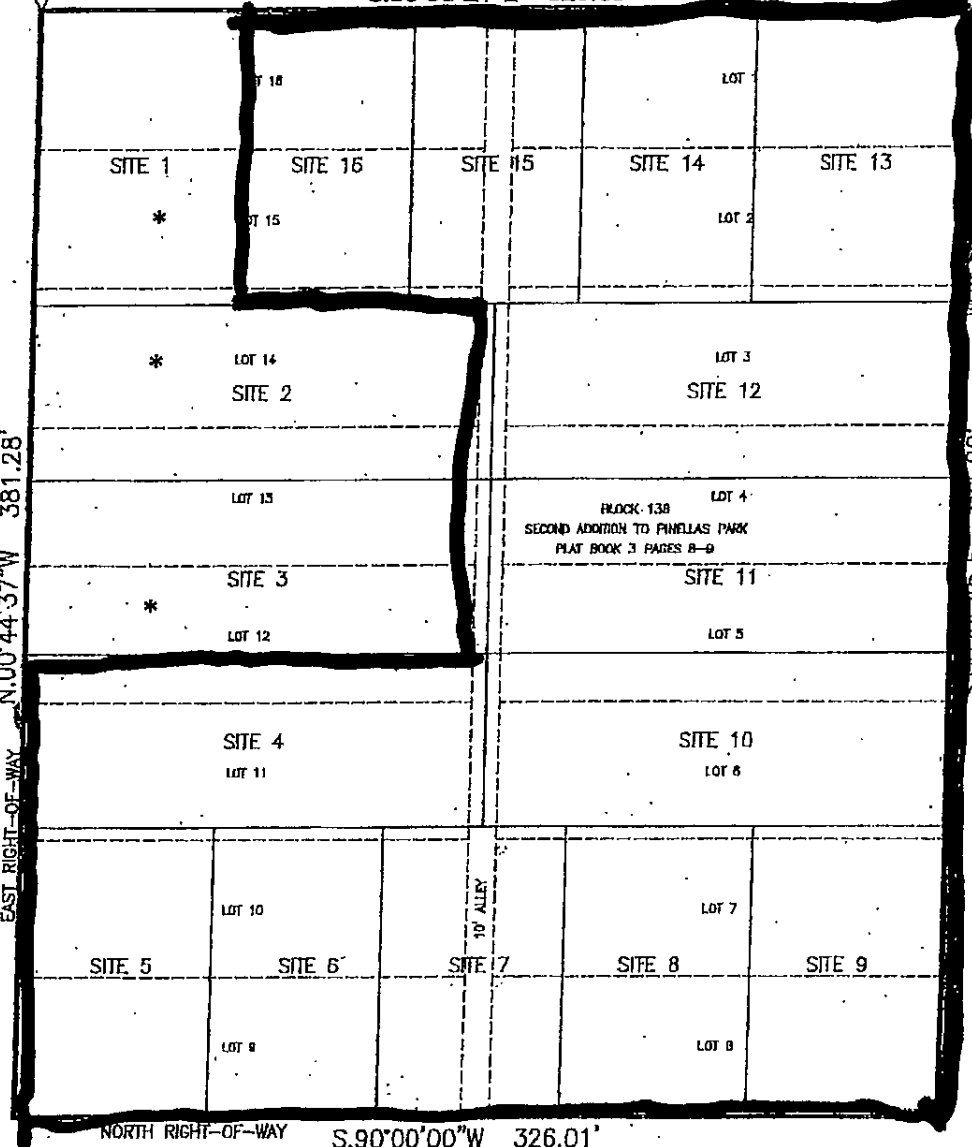
SOUTH RIGHT-OF-WAY

76th STREET NORTH

EAST RIGHT-OF-WAY N.00°44'37"W 381.28'

WEST RIGHT-OF-WAY S.00°44'45"E 381.22'

74th STREET NORTH



NORTH RIGHT-OF-WAY S.90°00'00"W 326.01'

70th AVENUE NORTH



*Not included in Legal Description-Hidden Preserve I

SHEET 1 OF 2
SEE SHEET 2 FOR DESCRIPTION



SCALE IN FEET
SCALE: 1" = 60'

SKETCH ONLY- NOT A SURVEY



Revolution Professional Services, Inc.
Surveying and Mapping Subsurface Utility Engineering

26400 U.S. Hwy 19 North Suite 137
Clearwater, FL 33783-2143

Phone: 727-798-8740 Fax: 727-798-8801 www.rpspls.com

EXHIBIT "A"
OVERALL PARCEL
BLOCK 138

SECTION 30, TOWNSHIP 30 SOUTH, RANGE 16 EAST
PINELLAS COUNTY, FLORIDA

SCALE: 1" = 60'

DATE: 04/14/14

DR/CHK: MFC/KCL

JOB NO. 1416A

71st AVENUE NORTH

POINT OF BEGINNING
NW CORNER BLOCK 138

S.89°59'21"E 326.00'

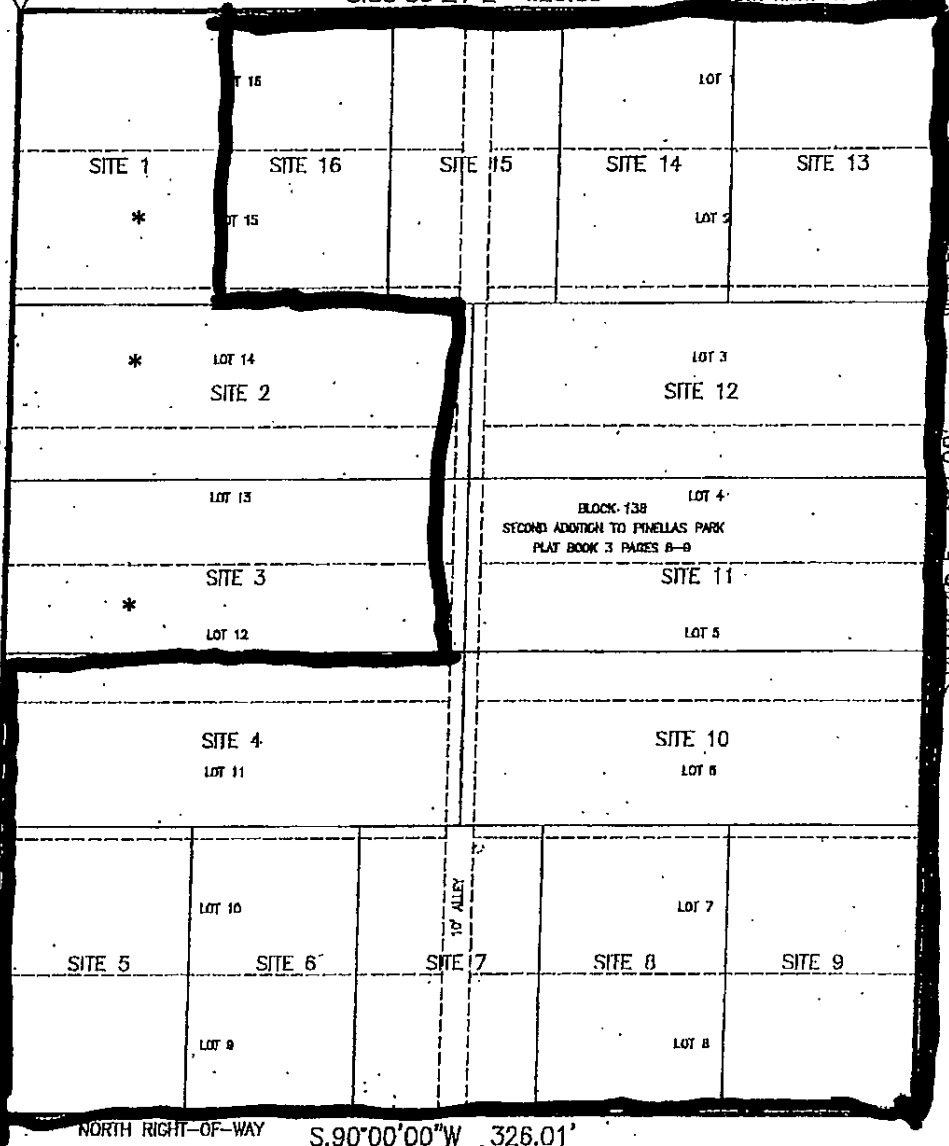
SOUTH RIGHT-OF-WAY

75th STREET NORTH

EAST RIGHT-OF-WAY N.00°44'37"W 381.28'

WEST RIGHT-OF-WAY S.00°44'45"E 381.22'

74th STREET NORTH



NORTH RIGHT-OF-WAY S.90°00'00"W 326.01'

70th AVENUE NORTH

*Not included in Legal Description-Hidden Preserve I



SCALE IN FEET
SCALE: 1" = 60'

SKETCH ONLY- NOT A SURVEY

SHEET 1 OF 2
SEE SHEET 2 FOR DESCRIPTION

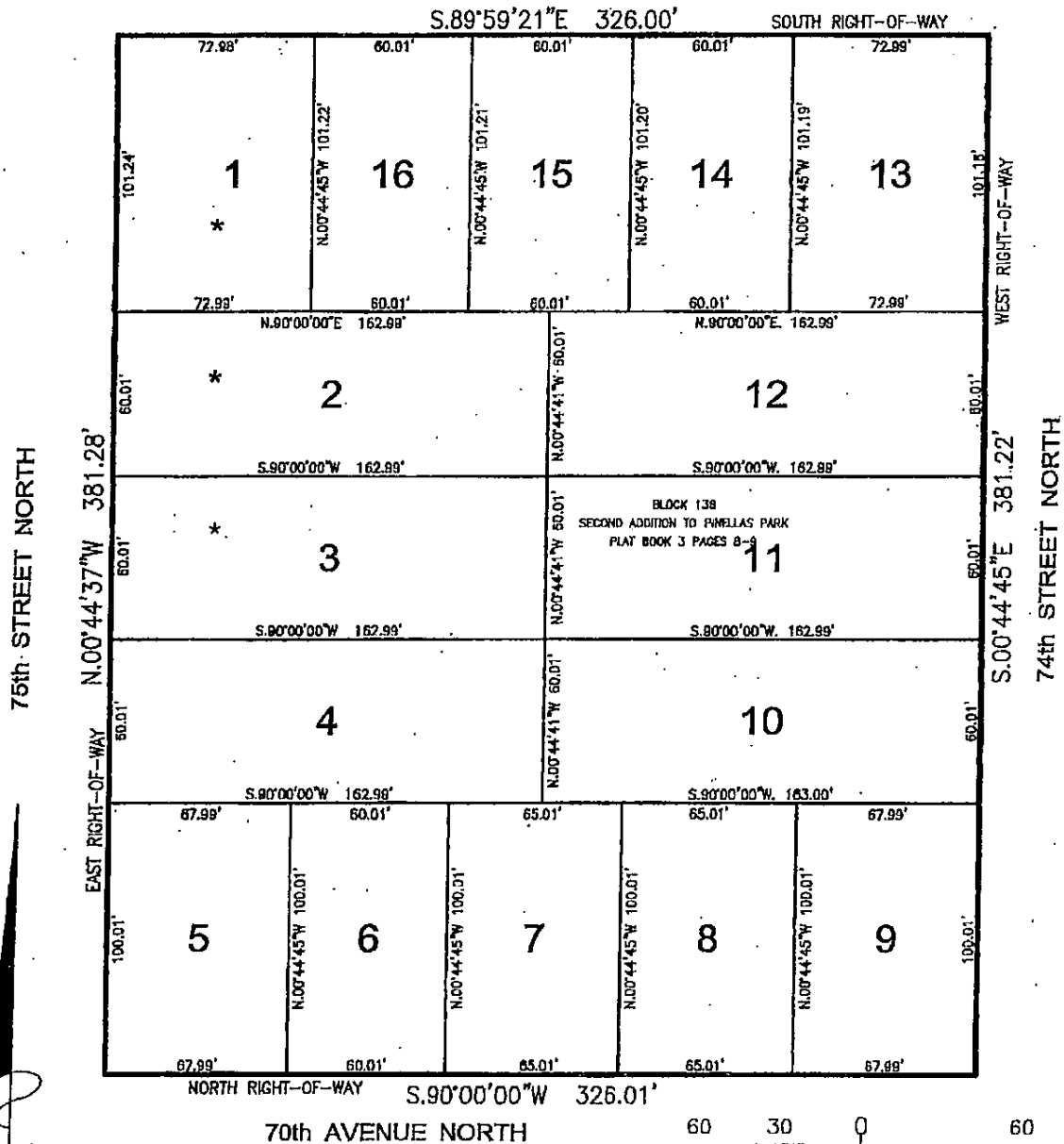
Revolution Professional Services, Inc.
Surveying and Mapping Subsurface Utility Engineering
26400 U.S. Hwy 19 North Suite 137
Clearwater, FL 33783-2143
Phone: 727-798-8740 Fax: 727-798-8801 www.rpspls.com

EXHIBIT **A**
OVERALL PARCEL
BLOCK 138

SECTION 30, TOWNSHIP 30 SOUTH, RANGE 16 EAST
PINELLAS COUNTY, FLORIDA

SCALE: 1" = 60' DATE: 04/14/14 DR/CHK: MFC/KCL JOB NO. 1416A

71st AVENUE NORTH



*Not Included In Legal Description-Hidden Preserve I

SHEET 1 OF 5
SEE SHEETS 2-5 FOR DESCRIPTIONS



SCALE IN FEET
SCALE: 1" = 60'

SKETCH ONLY- NOT A SURVEY



Revolution Professional Services, Inc.
Surveying and Mapping Subsurface Utility Engineering

25400 U.S. Hwy 19 North Suite 137
Clearwater, FL 33783-2143

Phone: 727-798-8740 Fax: 727-798-8801 www.rpspls.com

EXHIBIT 'A'
SITE 1-16 DESCRIPTIONS
BLOCK 138

SECTION 30, TOWNSHIP 30 SOUTH, RANGE 16 EAST
PINELLAS COUNTY, FLORIDA

SCALE: 1" = 60'

DATE: 04/14/14

DR/CHK: MFC/KCL

JOB NO. 1416A

SITE 1

A PORTION OF LOTS 14, 15 AND 16, BLOCK 138, SECOND ADDITION TO PINELLAS PARK SUBDIVISION AS PER PLAT THEREOF RECORDED IN PLAT BOOK 3, PAGES 8 AND 9, OF THE PUBLIC RECORDS OF PINELLAS COUNTY, FLORIDA, BEING MORE FULLY DESCRIBED AS FOLLOWS:

BEGINNING AT THE NORTHWEST CORNER OF SAID LOT 16, MEASURE S.89°59'21"E, ALONG THE SOUTH RIGHT-OF-WAY LINE OF 71ST AVENUE NORTH (A 60' R/W), A DISTANCE OF 72.98 FEET; THENCE LEAVING SAID LINE S.00°44'45"E, A DISTANCE OF 101.22 FEET; THENCE S.90°00'00"W, A DISTANCE OF 72.98 FEET TO A POINT ON THE EAST RIGHT-OF-WAY LINE OF 75TH STREET NORTH (A 60' R/W); THENCE N.00°44'37"W, ALONG SAID RIGHT-OF-WAY LINE A DISTANCE OF 101.24 FEET TO THE POINT OF BEGINNING. CONTAINING 7,388 SQUARE FEET (0.17 ACRES), MORE OR LESS.

SITE 2

A PORTION OF LOTS 13 AND 14 AND A PORTION OF A VACATED 10 FOOT WIDE ALLEY ABUTTING SAID LOTS ALONG THEIR EASTERLY BOUNDARY LINES, BLOCK 138, SECOND ADDITION TO PINELLAS PARK, ACCORDING TO THE PLAT THEREOF RECORDED IN PLAT BOOK 3, PAGES 8 AND 9, OF THE PUBLIC RECORDS OF PINELLAS COUNTY, FLORIDA, BEING MORE FULLY DESCRIBED AS FOLLOWS:

BEGINNING AT A POINT FOUND BY MEASURING FROM THE NORTHWEST CORNER OF SAID BLOCK 138, S.00°44'37"E, ALONG THE EASTERLY RIGHT-OF-WAY LINE OF 75TH STREET NORTH (A 60' R/W), A DISTANCE OF 101.24 FEET TO THE AFOREMENTIONED POINT OF BEGINNING; THENCE LEAVING SAID LINE, N.90°00'00"E, A DISTANCE OF 162.99 FEET; THENCE S.00°44'41"E, A DISTANCE OF 60.01 FEET; THENCE S.90°00'00"W, A DISTANCE OF 162.99 FEET TO A POINT ON THE AFOREMENTIONED EASTERLY RIGHT-OF-WAY LINE OF 75TH STREET NORTH; THENCE ALONG SAID RIGHT-OF-WAY LINE, N.00°44'37"W, A DISTANCE OF 60.01 FEET TO THE POINT OF BEGINNING. CONTAINING 9,781 SQUARE FEET (0.22 ACRES), MORE OR LESS.

SITE 3

A PORTION OF LOTS 12 AND 13 AND A PORTION OF A VACATED 10 FOOT WIDE ALLEY ABUTTING SAID LOTS ALONG THEIR EASTERLY BOUNDARY LINES, BLOCK 138, SECOND ADDITION TO PINELLAS PARK, ACCORDING TO THE PLAT THEREOF RECORDED IN PLAT BOOK 3, PAGES 8 AND 9, OF THE PUBLIC RECORDS OF PINELLAS COUNTY, FLORIDA, BEING MORE FULLY DESCRIBED AS FOLLOWS:

BEGINNING AT A POINT FOUND BY MEASURING FROM THE NORTHWEST CORNER OF SAID BLOCK 138, S.00°44'37"E, ALONG THE EASTERLY RIGHT-OF-WAY LINE OF 75TH STREET NORTH (A 60' R/W), A DISTANCE OF 161.24 FEET TO THE AFOREMENTIONED POINT OF BEGINNING; THENCE LEAVING SAID LINE, N.90°00'00"E, A DISTANCE OF 162.99 FEET; THENCE S.00°44'41"E, A DISTANCE OF 60.01 FEET; THENCE S.90°00'00"W, A DISTANCE OF 162.99 FEET TO A POINT ON THE AFOREMENTIONED EASTERLY RIGHT-OF-WAY LINE OF 75TH STREET NORTH; THENCE ALONG SAID RIGHT-OF-WAY LINE, N.00°44'37"W, A DISTANCE OF 60.01 FEET TO THE POINT OF BEGINNING. CONTAINING 9,781 SQUARE FEET (0.22 ACRES), MORE OR LESS.

SITE 4

A PORTION OF LOTS 11 AND 12 AND A PORTION OF A VACATED 10 FOOT WIDE ALLEY ABUTTING SAID LOTS ALONG THEIR EASTERLY BOUNDARY LINES, BLOCK 138, SECOND ADDITION TO PINELLAS PARK ACCORDING TO THE PLAT THEREOF RECORDED IN PLAT BOOK 3, PAGES 8 AND 9 OF THE PUBLIC RECORDS OF PINELLAS COUNTY, FLORIDA BEING MORE FULLY DESCRIBED AS FOLLOWS:

BEGINNING AT A POINT FOUND BY MEASURING FROM THE NORTHWEST CORNER OF SAID BLOCK 138, S.00°44'37"E, ALONG THE EASTERLY RIGHT-OF-WAY LINE OF 75TH STREET NORTH (A 60' R/W), A DISTANCE OF 221.25 FEET TO THE AFOREMENTIONED POINT OF BEGINNING; THENCE LEAVING SAID LINE, N.90°00'00"E, A DISTANCE OF 162.99 FEET; THENCE S.00°44'41"E, A DISTANCE OF 60.01 FEET; THENCE S.90°00'00"W, A DISTANCE OF 162.99 FEET TO A POINT ON THE AFOREMENTIONED EAST RIGHT-OF-WAY LINE OF 75TH STREET NORTH; THENCE ALONG SAID EAST RIGHT-OF-WAY LINE, N.00°44'37"W, A DISTANCE OF 60.01 FEET TO THE POINT OF BEGINNING. CONTAINING 0.22 ACRES (9782 SQ. FT.), MORE OR LESS.

SHEET 2 OF 5

SKETCH ONLY- NOT A SURVEY



Revolution Professional Services, Inc.

Surveying and Mapping Subsurface Utility Engineering

26400 U.S. Hwy 19 North Suite 137

Clearwater, FL 33783-2143

Phone: 727-798-8740 Fax: 727-798-8801 www.rpspls.com

EXHIBIT "A"

**SITE 1-16 DESCRIPTIONS
BLOCK 138**

SCALE: 1"= 60'

DATE: 04/14/14

DR/CHK: MFC/KCL

JOB NO. 1416A

SECTION 30, TOWNSHIP 30 SOUTH, RANGE 16 EAST
PINELLAS COUNTY, FLORIDA

SITE 5

A PORTION OF LOTS 9, 10 AND 11, BLOCK 138, SECOND ADDITION TO PINELLAS PARK ACCORDING TO THE PLAT THEREOF AS RECORDED IN PLAT BOOK 3, PAGES 8 AND 9 PUBLIC RECORDS OF PINELLAS COUNTY, FLORIDA, BEING MORE FULLY DESCRIBED AS FOLLOWS:

BEGINNING AT A POINT FOUND BY MEASURING FROM THE NORTHWEST CORNER OF SAID BLOCK 138, S.00°44'37"E. ALONG THE EASTERLY RIGHT-OF-WAY LINE OF 75TH STREET NORTH (A 60' R/W), A DISTANCE OF 281.25 FEET TO THE AFOREMENTIONED POINT OF BEGINNING; THENCE LEAVING SAID LINE, N.90°00'00"E., A DISTANCE OF 67.99 FEET; THENCE S.00°44'45"E., A DISTANCE OF 100.01 FEET TO A POINT ON THE NORTH RIGHT-OF-WAY LINE OF 70TH AVENUE NORTH (A 60' R/W); THENCE S.90°00'00"W., ALONG SAID RIGHT-OF-WAY LINE, A DISTANCE OF 67.99 FEET TO A POINT ON THE AFOREMENTIONED EAST RIGHT-OF-WAY LINE OF 75TH STREET NORTH; THENCE ALONG SAID RIGHT-OF-WAY LINE, N.00°44'37"W., A DISTANCE OF 100.01 FEET TO THE POINT OF BEGINNING.
CONTAINING 0.16 ACRES (6799 SQ. FT.), MORE OR LESS.

SITE 6

A PORTION OF LOTS 9, 10 AND 11, BLOCK 138, SECOND ADDITION TO PINELLAS PARK ACCORDING TO THE PLAT THEREOF AS RECORDED IN PLAT BOOK 3, PAGES 8 AND 9 PUBLIC RECORDS OF PINELLAS COUNTY, FLORIDA, BEING MORE FULLY DESCRIBED AS FOLLOWS:

BEGINNING AT A POINT FOUND BY MEASURING FROM THE SOUTHWEST CORNER OF SAID BLOCK 138, N.90°00'00"E. ALONG THE NORTH RIGHT-OF-WAY LINE OF 70TH AVENUE NORTH (A 60' R/W), A DISTANCE OF 67.99 FEET TO THE AFOREMENTIONED POINT OF BEGINNING; THENCE LEAVING SAID LINE, N.00°44'45"W., A DISTANCE OF 100.01 FEET; THENCE N.90°00'00"E., A DISTANCE OF 60.01 FEET; THENCE S.00°44'45"E., A DISTANCE OF 100.01 FEET TO A POINT ON THE AFOREMENTIONED NORTH RIGHT-OF-WAY LINE OF 70TH AVENUE NORTH; THENCE ALONG SAID LINE, S.90°00'00"W., A DISTANCE OF 60.01 FEET TO THE POINT OF BEGINNING.
CONTAINING 0.14 ACRES (6000 SQ. FT.), MORE OR LESS.

SITE 7

A PORTION OF LOTS 6, 7, 8, 9, 10 AND 11, AND A PORTION OF A 10 FEET WIDE VACATED ALLEY, LYING IN BLOCK 138, SECOND ADDITION TO PINELLAS PARK, ACCORDING TO THE PLAT THEREOF AS RECORDED IN PLAT BOOK 3, PAGES 8 AND 9, PUBLIC RECORDS OF PINELLAS COUNTY, FLORIDA, BEING MORE FULLY DESCRIBED AS FOLLOWS:

BEGINNING AT A POINT FOUND BY MEASURING FROM THE SOUTHWEST CORNER OF SAID BLOCK 138, N.90°00'00"E. ALONG THE NORTH RIGHT-OF-WAY LINE OF 70TH AVENUE NORTH (A 60' R/W), A DISTANCE OF 128.00 FEET TO THE AFOREMENTIONED POINT OF BEGINNING; THENCE LEAVING SAID LINE, N.00°44'45"W., A DISTANCE OF 100.01 FEET; THENCE N.90°00'00"E., A DISTANCE OF 65.01 FEET; THENCE S.00°44'45"E., A DISTANCE OF 100.01 FEET TO A POINT ON THE SAID NORTH RIGHT-OF-WAY LINE OF 70TH AVENUE NORTH; THENCE ALONG SAID LINE, S.90°00'00"W., A DISTANCE OF 65.01 FEET TO THE POINT OF BEGINNING.
CONTAINING 0.15 ACRES (6501 SQ. FT.), MORE OR LESS.

SITE 8

A PORTION OF LOTS 6, 7 AND 8, BLOCK 138, SECOND ADDITION TO PINELLAS PARK ACCORDING TO THE PLAT THEREOF AS RECORDED IN PLAT BOOK 3, PAGES 8 AND 9 PUBLIC RECORDS OF PINELLAS COUNTY, FLORIDA BEING MORE FULLY DESCRIBED AS FOLLOWS:

BEGINNING AT A POINT FOUND BY MEASURING FROM THE SOUTHWEST CORNER OF SAID BLOCK 138, N.90°00'00"E. ALONG THE NORTH RIGHT-OF-WAY LINE OF 70TH AVENUE NORTH (A 60' R/W), A DISTANCE OF 193.01 FEET TO THE AFOREMENTIONED POINT OF BEGINNING; THENCE LEAVING SAID LINE, N.00°44'45"W., A DISTANCE OF 100.01 FEET; THENCE N.90°00'00"E., A DISTANCE OF 65.01 FEET; THENCE S.00°44'45"E., A DISTANCE OF 100.01 FEET TO A POINT ON THE SAID NORTH RIGHT-OF-WAY LINE OF 70TH AVENUE NORTH; THENCE ALONG SAID LINE, S.90°00'00"W., A DISTANCE OF 65.01 FEET TO THE POINT OF BEGINNING.
CONTAINING 0.15 ACRES (6501 SQ. FT.), MORE OR LESS.

SHEET 3 OF 5

SKETCH ONLY- NOT A SURVEY



Revolution Professional Services, Inc.

Surveying and Mapping Subsurface Utility Engineering

25400 U.S. Hwy 19 North Suite 137

Clearwater, FL 33763-2143

Phone: 727-786-8740 Fax: 727-786-8801 www.rpspls.com

EXHIBIT "A"

**SITE 1-16 DESCRIPTIONS
BLOCK 138**

SCALE: 1"= 60'

DATE: 04/14/14

DR/CHK: MFC/KCL

JOB NO. 1416A

SECTION 30, TOWNSHIP 30 SOUTH, RANGE 16 EAST
PINELLAS COUNTY, FLORIDA

SITE 9

A PORTION OF LOTS 6, 7 AND 8, BLOCK 138, SECOND ADDITION TO PINELLAS PARK ACCORDING TO THE PLAT THEREOF AS RECORDED IN PLAT BOOK 3, PAGES 8 AND 9 PUBLIC RECORDS OF PINELLAS COUNTY, FLORIDA, BEING MORE FULLY DESCRIBED AS FOLLOWS:

BEGINNING AT THE SOUTHEAST CORNER OF SAID LOT 8, SAID POINT ALSO BEING THE SOUTHEAST CORNER OF BLOCK 138; THENCE S.90°00'00"W., ALONG THE NORTH RIGHT-OF-WAY LINE OF 70TH AVENUE NORTH (A 60' R/W), A DISTANCE OF 67.99 FEET; THENCE LEAVING SAID LINE, N.00°44'45"W., A DISTANCE OF 100.01 FEET; THENCE N.90°00'00"E., A DISTANCE OF 67.99 FEET TO A POINT ON THE WEST RIGHT-OF-WAY LINE OF 74TH STREET NORTH (A 60' R/W); THENCE S.00°44'45"E., ALONG SAID LINE A DISTANCE OF 100.01 FEET TO THE POINT OF BEGINNING.
CONTAINING 0.16 ACRES (6799 SQ. FT.), MORE OR LESS.

SITE 10

A PORTION OF LOTS 5 AND 6 AND A PORTION OF THE VACATED 10 FEET WIDE ALLEY ABUTTING SAID LOTS ALONG THEIR WEST BOUNDARY LINES, BLOCK 138, SECOND ADDITION TO PINELLAS PARK ACCORDING TO THE PLAT THEREOF AS RECORDED IN PLAT BOOK 3, PAGES 8 AND 9 PUBLIC RECORDS OF PINELLAS COUNTY, FLORIDA BEING MORE FULLY DESCRIBED AS FOLLOWS:

BEGINNING AT A POINT FOUND BY MEASURING FROM THE SOUTHEAST CORNER OF SAID BLOCK 138, N.00°44'45"W., ALONG THE WEST RIGHT-OF-WAY LINE OF 74TH STREET NORTH (A 60' R/W), A DISTANCE OF 100.01 FEET TO THE AFOREMENTIONED POINT OF BEGINNING; THENCE, LEAVING SAID LINE S.90°00'00"W., A DISTANCE OF 163.00 FEET; THENCE N.00°44'41"W., A DISTANCE OF 60.01 FEET; THENCE N.90°00'00"E., A DISTANCE OF 162.99 FEET TO A POINT ON THE AFOREMENTIONED WEST RIGHT-OF-WAY LINE OF 74TH STREET NORTH; THENCE ALONG SAID RIGHT-OF-WAY LINE, S.00°44'45"W., A DISTANCE OF 60.01 FEET TO THE POINT OF BEGINNING.
CONTAINING 0.22 ACRES (9780 SQ. FT.), MORE OR LESS.

SITE 11

A PORTION OF LOTS 4 AND 5 AND A PORTION OF THE VACATED 10 FEET WIDE ALLEY ABUTTING SAID LOTS ALONG THEIR WEST BOUNDARY LINES, BLOCK 138, SECOND ADDITION TO PINELLAS PARK ACCORDING TO THE PLAT THEREOF AS RECORDED IN PLAT BOOK 3, PAGES 8 AND 9 PUBLIC RECORDS OF PINELLAS COUNTY, FLORIDA BEING MORE FULLY DESCRIBED AS FOLLOWS:

BEGINNING AT A POINT FOUND BY MEASURING FROM THE SOUTHEAST CORNER OF SAID BLOCK 138, N.00°44'45"W., ALONG THE WEST RIGHT-OF-WAY LINE OF 74TH STREET NORTH (A 60' R/W), A DISTANCE OF 160.02 FEET TO THE AFOREMENTIONED POINT OF BEGINNING; THENCE, LEAVING SAID LINE, S.90°00'00"W., A DISTANCE OF 162.99 FEET; THENCE N.00°44'41"W., A DISTANCE OF 60.01 FEET; THENCE N.90°00'00"E., A DISTANCE OF 162.99 FEET TO A POINT ON THE AFOREMENTIONED WEST RIGHT-OF-WAY LINE OF 74TH STREET NORTH; THENCE ALONG SAID RIGHT-OF-WAY LINE, S.00°44'45"W., A DISTANCE OF 60.01 FEET TO THE POINT OF BEGINNING.
CONTAINING 0.22 ACRES (9780 SQ. FT.), MORE OR LESS.

SITE 12

A PORTION OF LOTS 3 AND 4 AND A PORTION OF THE VACATED 10 FEET WIDE ALLEY ABUTTING SAID LOTS ALONG THEIR WEST BOUNDARY LINES, BLOCK 138, SECOND ADDITION TO PINELLAS PARK ACCORDING TO THE PLAT THEREOF AS RECORDED IN PLAT BOOK 3, PAGES 8 AND 9 PUBLIC RECORDS OF PINELLAS COUNTY, FLORIDA, BEING MORE FULLY DESCRIBED AS FOLLOWS:

BEGINNING AT A POINT FOUND BY MEASURING FROM THE SOUTHEAST CORNER OF SAID BLOCK 138, N.00°44'45"W., ALONG THE WEST RIGHT-OF-WAY LINE OF 74TH STREET NORTH (A 60' R/W), A DISTANCE OF 220.03 FEET TO THE AFOREMENTIONED POINT OF BEGINNING; THENCE, LEAVING SAID LINE S.90°00'00"W., A DISTANCE OF 162.99 FEET; THENCE N.00°44'41"W., A DISTANCE OF 60.01 FEET; THENCE N.90°00'00"E., A DISTANCE OF 162.99 FEET TO A POINT ON THE AFOREMENTIONED WEST RIGHT-OF-WAY LINE OF 74TH STREET NORTH; THENCE ALONG SAID RIGHT-OF-WAY LINE, S.00°44'45"W., A DISTANCE OF 60.01 FEET TO THE POINT OF BEGINNING.
CONTAINING 0.22 ACRES (9780 SQ. FT.), MORE OR LESS.

SHEET 4 OF 5

SKETCH ONLY- NOT A SURVEY



Revolution Professional Services, Inc.
Surveying and Mapping Subsurface Utility Engineering

25400 U.S. Hwy 19 North Suite 137
Clearwater, FL 33763-2143

Phone: 727-798-8740 Fax: 727-798-8801 www.rpspls.com

EXHIBIT "A" SITE 1-16 DESCRIPTIONS BLOCK 138

SECTION 30, TOWNSHIP 30 SOUTH, RANGE 16 EAST
PINELLAS COUNTY, FLORIDA

SCALE: 1" = 60'

DATE: 04/14/14

DR/CHK: MFC/KCL

JOB NO. 1416A

SITE 13

A PORTION OF LOTS 1, 2 AND 3, BLOCK 138, SECOND ADDITION TO PINELLAS PARK, ACCORDING TO THE PLAT THEREOF AS RECORDED IN PLAT BOOK 3, PAGES 8 AND 9, PUBLIC RECORDS OF PINELLAS COUNTY, FLORIDA, BEING MORE FULLY DESCRIBED AS FOLLOWS:

BEGINNING AT THE NORTHEAST CORNER OF SAID BLOCK 138; THENCE S.00°44'45"E., ALONG THE WEST RIGHT-OF-WAY LINE OF 74TH STREET NORTH (A 60' R/W) A DISTANCE OF 101.18 FEET; THENCE LEAVING SAID LINE, S.90°00'00"W., A DISTANCE OF 72.99 FEET; THENCE N.00°44'45"W., A DISTANCE OF 101.19 FEET TO A POINT ON THE SOUTH RIGHT-OF-WAY LINE OF 71ST AVENUE NORTH (A 60' R/W); THENCE S.89°59'21"E., ALONG SAID LINE, A DISTANCE OF 72.99 FEET TO THE POINT OF BEGINNING. CONTAINING 0.17 ACRES (7384 SQ. FT.), MORE OR LESS.

SITE 14

A PORTION OF LOTS 1, 2 AND 3, BLOCK 138, SECOND ADDITION TO PINELLAS PARK, ACCORDING TO THE PLAT THEREOF AS RECORDED IN PLAT BOOK 3, PAGES 8 AND 9 PUBLIC RECORDS OF PINELLAS COUNTY, FLORIDA, BEING MORE FULLY DESCRIBED AS FOLLOWS:

BEGINNING AT A POINT FOUND BY MEASURING FROM THE NORTHEAST CORNER OF SAID BLOCK 138, N.89°59'21"W., ALONG THE SOUTH RIGHT-OF-WAY LINE OF 71ST AVENUE NORTH (A 60' R/W), A DISTANCE OF 72.99 FEET TO THE AFOREMENTIONED POINT OF BEGINNING; THENCE LEAVING SAID LINE, S.00°44'45"E., A DISTANCE OF 101.19 FEET; THENCE S.90°00'00"W., A DISTANCE OF 60.01 FEET; THENCE N.00°44'45"W., A DISTANCE OF 101.20 FEET TO A POINT ON THE AFOREMENTIONED SOUTH RIGHT-OF-WAY LINE OF 71ST AVENUE NORTH; THENCE ALONG SAID LINE, S.89°59'21"E., A DISTANCE OF 60.01 FEET TO THE POINT OF BEGINNING. CONTAINING 0.14 ACRES (6072 SQ. FT.), MORE OR LESS.

SITE 15

A PORTION OF LOTS 1, 2, 3, 14, 15 AND 6, AND A PORTION OF THE 10 FEET WIDE VACATED ALLEY ABUTTING SAID LOTS, BLOCK 138, SECOND ADDITION TO PINELLAS PARK, ACCORDING TO THE PLAT THEREOF AS RECORDED IN PLAT BOOK 3, PAGES 8 AND 9 PUBLIC RECORDS OF PINELLAS COUNTY, FLORIDA, BEING MORE FULLY DESCRIBED AS FOLLOWS:

BEGINNING AT A POINT FOUND BY MEASURING FROM THE NORTHWEST CORNER OF SAID BLOCK 138, S.89°59'21"E., ALONG THE SOUTH RIGHT-OF-WAY LINE OF 71ST AVENUE NORTH (A 60' R/W), A DISTANCE OF 132.99 FEET TO THE AFOREMENTIONED POINT OF BEGINNING; THENCE CONTINUING ALONG SAID LINE, S.89°59'21"E., A DISTANCE OF 60.01 FEET; THENCE LEAVING SAID LINE, S.00°44'45"E., A DISTANCE OF 101.20 FEET; THENCE S.90°00'00"W., A DISTANCE OF 60.01 FEET; THENCE N.00°44'45"W., A DISTANCE OF 101.21 FEET TO THE POINT OF BEGINNING. CONTAINING 0.14 ACRES (6072 SQ. FT.), MORE OR LESS.

SITE 16

A PORTION OF LOTS 14, 15 AND 16, BLOCK 138, SECOND ADDITION TO PINELLAS PARK, ACCORDING TO THE PLAT THEREOF AS RECORDED IN PLAT BOOK 3, PAGES 8 AND 9 PUBLIC RECORDS OF PINELLAS COUNTY, FLORIDA, BEING MORE FULLY DESCRIBED AS FOLLOWS:

BEGINNING AT A POINT FOUND BY MEASURING FROM THE NORTHWEST CORNER OF SAID BLOCK 138, S.89°59'21"E., ALONG THE SOUTH RIGHT-OF-WAY LINE OF 71ST AVENUE NORTH (A 60' R/W), A DISTANCE OF 72.98 FEET TO THE AFOREMENTIONED POINT OF BEGINNING; THENCE CONTINUING ALONG SAID LINE, S.89°59'21"E., A DISTANCE OF 60.01 FEET; THENCE LEAVING SAID LINE, S.00°44'45"E., A DISTANCE OF 101.21 FEET; THENCE S.90°00'00"W., A DISTANCE OF 60.01 FEET; THENCE N.00°44'45"W., A DISTANCE OF 101.22 FEET TO THE POINT OF BEGINNING. CONTAINING 0.14 ACRES (6072 SQ. FT.), MORE OR LESS.

SHEET 5 OF 5

SKETCH ONLY- NOT A SURVEY



Revolution Professional Services, Inc.

Surveying and Mapping Subsurface Utility Engineering

25400 U.S. Hwy 19 North Suite 137

Clearwater, FL 33783-2143

Phone: 727-798-8740 Fax: 727-798-8801 www.rpspls.com

EXHIBIT "A"

**SITE 1-16 DESCRIPTIONS
BLOCK 138**

SECTION 30, TOWNSHIP 30 SOUTH, RANGE 16 EAST
PINELLAS COUNTY, FLORIDA

SCALE: 1" = 60'

DATE: 04/14/14

DR/CHK: MFC/KCL

JOB NO. 1416A